

• TRUSTED QUALITY SINCE 1921 •

**RUST-OLEUM®**

# Make It Yours

CREATIVE PAINT IDEAS & INSPIRATION FOR YOUR HOME & GARDEN



## Spray paint your kitchen

A fabulous new look for less.



## Picture perfect

Spray painted picture frames.



## Outdoor special

Fantastic makeover projects!



# WIN £250

Find out how your own spray paint project could bag you £250 in our monthly giveaway!

▼ Chairs painted with Mode spray paint from Rust-Oleum. Shown in Pure Aqua (foreground) and Sunflower (background) - both in ultra high gloss finish.



# Welcome

Welcome to Make It Yours, issue 3, where we continue to spread the word on the wonders of spray painting! Those of you that have tried it will know about its amazing transformational powers but for those who haven't tried spray painting yet, read on and be inspired by its never-ending uses in and around the home and garden.

In this issue we introduce the astonishing ultra gloss finish in a can: Rust-Oleum Mode. Perfect for achieving a luxurious and modern high gloss finish on your cabinets and furniture. If your kitchen is crying out for an update but you can't afford a costly re-fit, then take a look and be inspired! We also introduce more new products to the Rust-Oleum family, with brush paints in our Universal, Painter's Touch, Metallic and Chalkboard paints.

Our popular monthly competition is back! "Show Us Your Stuff" gives contestants a chance to win £250 or a bumper pack of spray paint simply by sending us a photo of your latest project using Rust-Oleum paints.

For more information on this and details of our stockists visit our website at [www.rustoleumsspraypaint.com](http://www.rustoleumsspraypaint.com).

Happy spray painting!

**The Rust-Oleum Team**



For more spray painting tutorials and project ideas  
please visit [www.rustoleumsspraypaint.com](http://www.rustoleumsspraypaint.com)



# HOW TO SPRAY PAINT

If you've never used spray paint before, don't worry - it's far easier than you think. Just follow these simple instructions from the experts at Rust-Oleum and you'll be up and running in no time.



## Step 1

Before you begin, make sure you're in a well ventilated area. After reading the instructions begin shaking the can for the stated amount of time. For most spray paints it is recommended you begin counting time once the can makes a noticeable rattling sound.



## Step 2

Put some old newspaper down and practise your spraying technique. Note that if you go too fast or leave the can pointing at one spot too long, you'll get uneven gloss. Practise spraying in slightly overlapping stripes.



## Step 3

Carefully prepare the object ensuring it is clean and dry. Prime where necessary. Test the paint on an inconspicuous area of the object to be painted to ensure colour compatibility. Use a specialist primer as necessary.



## Step 4

Carefully mask any areas of the object not to be painted. Apply the paint quickly at the recommended spraying distance, alternating between moving the can from left to right and up and down. Pause to shake the can at regular intervals during painting. Be sure to slightly overlap on each stroke to prevent striping. Apply several thin coats and allow to dry for the stated time before recoating.





# High gloss

## ON A BUDGET

Bright, light, modern and clean, high gloss finishes are bang on trend, with an increasing number of people choosing them for their kitchens and furniture.

New Rust-Oleum Mode is a unique spray paint that enables you to achieve an ultra high gloss finish straight from a can. The range has been developed by our technical experts, who have created a colour palette in line with current interior fashions and emerging trends.



◀ Spray paint your existing kitchen units to get that ultra high gloss look for a fraction of the price. Cabinet doors painted with Mode spray paint from Rust-Oleum in Carmine Red.

High gloss surfaces provide visual impact in any room and the great news is now you don't have to be an expert to create them. Rust-Oleum Mode is easy to use and ideal for giving items a stunning makeover for a fraction of the price of replacing them.

From cool grey and calm cream hues through to a vibrant Lime Green and Hot Pink, the Mode range delivers a highly sought after designer finish - without the designer price tag.



**Pure Aqua**  
Ultra high gloss



**Celeste**  
Ultra high gloss



**Lime Green**  
Ultra high gloss



**Sunflower**  
Ultra high gloss



**Carmine Red**  
Ultra high gloss



**Hot Pink**  
Ultra high gloss



**Charcoal**  
Ultra high gloss



**Steel Grey**  
Ultra high gloss



**White**  
Ultra high gloss



**Mocha**  
Ultra high gloss



**Cream**  
Ultra high gloss



**Chamoisee**  
Ultra high gloss



◀ Rust-Oleum Mode in Sunflower was used to give a glossy, modern makeover to this previously plain, metal lampshade.



▲ Rust-Oleum Mode in Lime Green gives this plain wooden table a fresh, acidic glossy colour, bringing it right up to date.

One can.  
INFINITE POSSIBILITIES.





Black (Matt, Satin and Gloss)



White (Matt, Satin and Gloss)



Slate Grey (Gloss)



Canary Yellow (Gloss)



Cobalt Blue (Gloss)



Cardinal Red (Gloss)



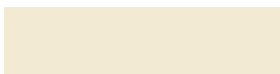
Emerald Green (Gloss)



Racing Green (Gloss)



Espresso Brown (Gloss)



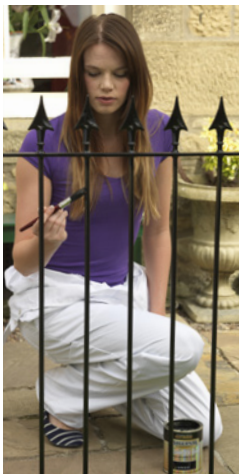
Heirloom White (Gloss)



Real Almond (Gloss)



Real Orange (Gloss)



Rust-Oleum Universal All-Surface spray paint has taken the UK paint market by storm. It's the paint you can use to paint anything and we're pleased to announce it's now available in a brush applied format.

Universal All-Surface Paint is a paint and primer in one. It's the perfect paint for anyone who has ever stood in the paint aisle wondering which paint to choose for the job.

Now there's no need to buy multiple tins for different tasks - Universal works equally well on wood, metal, ceramics and most plastics. Available in 12 classic colours the paint is perfect for interior and exterior projects. For more information and project ideas visit our website at [www.rustoleumspraypaint.com](http://www.rustoleumspraypaint.com).



ABC



**Chalkboard Paint**  
Black (Matt)



**Chalkboard Paint**  
Blue (Matt)



**Magnetic Chalkboard Paint**  
Black (Matt)



# Too cool for school

Chalkboards are now a popular design statement in homes, particularly in kitchens. They're also great for children's bedrooms. In addition to our popular Chalkboard spray paint, we have added three new brush-applied chalkboard paints to provide you with even more design options. Now you can create a chalkboard anywhere - in an instant! These paints are perfect for covering large areas, or where a brush application is required (*or preferred*).

## **NEW! Chalkboard Paint (Brush)**

(750ml, Matt finish, Black or Blue)

Create a tough, scratch resistant chalkboard finish in traditional Black, or in a contemporary, striking Blue. Perfect on walls or on wood, metal, plastic and more. It works with traditional chalks or liquid chalk markers and erases cleanly.

## **NEW! Magnetic Chalkboard Paint**

(750ml, Matt finish, Black)

This brush applied paint converts an ordinary surface into a usable chalkboard that can be written on, and attracts magnets. Great for kids bedrooms - apply to interior wood, metal, plastic, wallpaper and more.



## Chalkboard Paint (Spray)

(400ml, Matt finish, Black)

Rust-Oleum Chalkboard Paint is a tough, scratch resistant spray paint finish that allows you to create a writeable / wipeable chalkboard surface on a wide range of substrates including wood, metal and glass.



▼ For a timeless, sophisticated and elegant finish on an ornate mirror frame, use Rust-Oleum Metallic in Gold.



▼ For your peace of mind, Painter's Touch brush applied paints are both waterbased and certified "Toy-Safe". Perfect for using on children's toys and accessories.



▼ Our decorative mobile has been painted with Rust-Oleum Painter's Touch in Candy Pink.



# Get creative

WITH OUR **NEW** BRUSH APPLIED PAINTS

To give you even greater choice, we've taken some of the most popular colours from our Painter's Touch and Metallic spray paint ranges and made them available in brush applied formats for the first time.

These new additions to the range are water-based and certified as "Toy-Safe". Every batch made is tested to ensure it meets stringent safety standards.

Quick drying, the paints can be used on a wide variety of indoor and outdoor surfaces including wood, metal and ceramics. The handy 250ml pack size makes them the ideal small project paint.

## **NEW! Painter's Touch** (250ml)

A multi-purpose, water-based paint for a wide range of small projects and crafts. For use on both indoor and outdoor objects, available in our best-selling colours. Quick-drying, it's perfect for children's toys, picture frames, vases, bric-a-brac and garden accessories, giving them a durable, protective finish.

## **NEW! Metallic** (250ml)

Give your projects an elegant metallic sheen with Rust-Oleum Metallic paint, available in Gold and Silver finishes. This water-based paint is perfect for wood, metal and ceramic and is safe for children's toys as well as other objects in and around the home. This paint is easy to apply with good brushing and spreading properties, giving objects a lustrous and durable finish.



Black (Gloss)



Black (Satin)



White (Gloss)



White (Satin)



Heirloom White (Satin)



Chestnut (Gloss)



Cherry Red (Gloss)



Candy Pink (Gloss)



Metallic Gold



Metallic Silver

PROJECT IDEAS

# Sitting pretty

Weathered and tired outdoor furniture and seating can drastically affect the appearance of your patio or outdoor space. Ensure it is looking its best by giving weary chairs and tables a quick update with Universal spray paint from Rust-Oleum. Perfect for many different substrates including wood, metal, wicker, mdf and plastic, the beauty of using this paint is the speed at which your project can be carried out! Spray paint dries for recoat in around 15-20 minutes meaning a chair makeover can take less than one hour!

Rust-Oleum Universal can also be sprayed at any angle, even upside down so there's no need to stop painting to adjust the angle of your object. Even better, you have no messy brushes to clean up afterwards so you can simply put your feet up and test out your handiwork!

Rust-Oleum Universal is available in gloss, satin, matt, metallic and hammered finishes in 20 different shades. For more details visit [www.rustoleumspraypaint.com](http://www.rustoleumspraypaint.com).



▲ Rust-Oleum Universal in White is available in Gloss, Satin and Matt so choose the finish you prefer.







▲ Use spray paint to add bright, bold colour to furniture and make an extravagant fashion statement in your garden!

Follow our easy steps below and revamp your garden furniture in no time:

**1.** Move the object(s) to be painted to a well-ventilated area and place on top of newspaper or a dust sheet. Mask off any areas of the object not to be painted. Protect the surrounding area with additional dust sheets or newspaper.

**2.** Ensure surfaces to be painted are free from loose paint, rust, wax, oil and grease. Previously painted surfaces should be abraded to provide a key.

**3.** Using your selected product / colour hold the can approximately 30cm from the surface of the object(s) and spray in a steady back and forth motion, slightly overlapping with each stroke. For best results whilst spraying keep the can the same distance from the surface and keep the can in motion. Apply several light coats a few minutes apart. For our wicker chair we used Rust-Oleum Universal in Real Orange (Gloss).

**TIP:** Spray paint is perfect for wicker, covering all the hard to reach areas that are difficult to reach with a brush.



### ▼ Paint your existing units

Handpainted kitchen units are not only on-trend, they give your kitchen a unique, bespoke feel. By painting your existing units you can not only save on the cost of replacement units, but the units can be repainted when you are ready for a change.



## PROJECT IDEAS

# Easy kitchen updates

Save on the cost of an expensive kitchen refit and paint your existing kitchen cabinets with Rust-Oleum Universal. Available in 12 traditional shades, this hard-wearing paint can be applied to many surfaces without the need for a primer. Great on wood, metal, plastic, UPVC, laminates, ceramic and more.

One of the strengths of a painted kitchen is that you're not limited to one colour. Using two or three shades adds interest and makes your kitchen unique. Paint accessories and furniture in your kitchen to coordinate with your units. Be brave in your colour choice as you can always repaint at a later date if you tire of it! Use lighter shades for a clean, fresh look or for a very on-trend look go for grey.



### ▼ Add a splash of colour

Bump up the colour in your kitchen with spray paint. With so many shades to choose from, it is easy to transform your kitchen without spending a fortune. We used Rust-Oleum Painter's Touch in Spa Blue on our units, table and chairs. You can also spray paint your kitchen accessories as well as your appliances!



Rust-Oleum Painter's Touch spray paint is another great paint for transforming your units. Choose from gloss, satin or matt finishes and pick a colour from over 40 shades. With the advantage of a brush-mark free finish, spray paints are simple to use and fast drying.

A pop of bold colour such as blue can enhance the rest of your kitchen and bring a happy contrast to a contemporary white finish. More neutral, classic shades will be timeless and appealing should you wish to update your kitchen to sell your home.

For the ultra modern high gloss kitchen, Rust-Oleum Mode spray paint as featured on pages 5-8 is the only paint for the job!

If a full kitchen revamp is not on the cards, update fridges and washing machines with Rust-Oleum Appliance Enamel (available in white and stainless steel), refresh a radiator with Rust-Oleum Radiator Enamel or add a chalkboard with Rust-Oleum Chalkboard Paint!



▲ Use lighter shades for a clean, fresh look that will give the feeling of space - perfect for small kitchens.

# Spray paint a radiator



▲ Spray paint gives radiators a smooth, professional finish and a radiator that looks like new.

► An old cast iron radiator is made over with Rust-Oleum Radiator Enamel in Chrome.

Spray Painting is a quick and easy way to improve the appearance of a radiator, which in turn can completely change the look of a room. A smooth, brush-mark free and very professional finish can be achieved in minutes.

Rust-Oleum's Radiator Enamel is available in white satin, white gloss, chrome and silver metallic.

You can find a useful, step by step guide on revamping a radiator at [www.rustoleumspraypaint.com](http://www.rustoleumspraypaint.com).



## PROJECT IDEAS

# Glossy bookcase

Coordinate your bookshelf with the rest of your room and give it a sleek, glossy makeover with Rust-Oleum Mode spray paint. With a super-smooth, flawless finish, it is possible to transform an old bookshelf for the cost of a can of spray paint. Here's how:

Stand your bookshelf on some newspaper or dust sheets in a well ventilated area. Clean the bookshelf to ensure the surface is free from dirt, oil, and grease and allow it to dry.

Apply one coat of Rust-Oleum Mode Primer and leave this to dry for 12 hours. Then apply two light coats of Rust-Oleum Mode in your chosen shade, ensuring you follow the application instructions on the can.

Use slightly overlapping strokes, moving the can from left to right and up and down. Pause to shake the can at regular intervals during painting. Allow each coat to dry for the stated time.

◀ Our old MDF bookshelf has been given an inexpensive, ultra-glossy restyle with Rust-Oleum Mode spray paint in Mocha.



# Perfect frames

Create your own unique picture frames with Rust-Oleum spray paint. Select from our vast array of colours, finishes and special effects for your perfect frame.



Show off your treasured photographs and artwork in beautifully coordinated picture frames, but instead of trailing round shops to find the perfect frame, use spray paint to update your existing frames. Alternatively pick up some cheap, mismatched, second-hand frames and give them a quick and easy makeover. Coordinate the frames to your interior décor or to compliment the images that you are framing. Use a metallic finish to give any frame an elegant, timeless finish. Crisp white picture frames are great for displaying a collection of black and white photographs.



Top right: Frames painted in Painter's Touch Slate Blue (Satin), Dark Grey (Gloss), Navy Blue (Gloss), Winter Grey (Gloss). Below right: Photo frames painted in Painter's Touch in White (Satin).



► **Paint fast without the fuss**

Spray paint is perfect for updating frames with intricate scrolling and delicate details that would be difficult to paint with a brush. Spray paint covers quickly and easily and dries in just 20 minutes, with no messy brushes to clean afterwards. Visit our website to select a colour and to find your nearest Rust-Oleum stockist: [www.rustoleumspraypaint.com](http://www.rustoleumspraypaint.com).



Frame painted in Rust-Oleum Universal in White (Satin)

# the great *out-*



If the winter has taken it's toll on your garden ornaments and furniture – before you go to the expense of replacing them try some of our easy updates – each will cost you no more than a can or two of spray paint.





▼ Rust-Oleum Painter's Touch in Brilliant Blue (Gloss) and Sun Yellow (Gloss) give a vibrant colour burst to our watering cans.

Spray paint is a great way to introduce colour to your outdoor space or it can give your furniture a completely new look. Transform dark greens and browns to crisp whites and creams for a romantic, whimsical look. Use shades of vibrant orange and amber for an energetic, lively-vibe. Blacks and greys give a classic, rustic feel to your patio or garden.



Before



Before



▲ Wicker baskets and wicker furniture really benefit from a few coats of spray paint as it reaches all those parts that are difficult to reach with a brush. We used Rust-Oleum Painter's Touch in Fossil (Satin) to transform a plain wicker basket.

▲ Revamp tired garden ornaments with Rust-Oleum Textured spray paint for a unique finish. We used Rust-Oleum Textured in Aged Iron on our ceramic duck.

**Chair flair** revitalise your metal garden furniture with Rust-Oleum Painter's Touch spray paint.





Before

**Rescued** These chairs were found in a salvage yard, cleaned down and given two coats of Painter's Touch in Heirloom White (Satin). The table base was also painted in Black (Matt).



▲ Metal planters and watering cans can be given a new lease of life with Rust-Oleum Painter's Touch. We used Sun Yellow (Gloss) on our watering can and Espresso Brown (Gloss) on a plain metal bucket.

▼ Rust-Oleum Painter's Touch in Berry Pink (Gloss) has brought this small table to life and brings a vibrant splash of colour to your garden.



▲ It's easy to colour coordinate accessories in your garden using spray paint. We used Rust-Oleum Painter's Touch in French Lilac (Satin), Purple (Gloss) and Blossom White (Satin) on these lanterns.



▲ Give added depth to plain garden ornaments with a textured finish: Our rabbit ornament has been sprayed with Rust-Oleum Textured in Autumn Brown.



▼ And don't forget the bird feeder - they can also look great with a splash of colour. We used Rust-Oleum Painter's Touch in Berry Pink (Gloss), Strawflower (Satin) and French Lilac (Satin).



METALLICS

Di

# Unleash your inner Midas Touch

Add a subtle sparkle to any room with silver spray paint or some instant opulence with gold!



▲ All of the objects above have been painted with Rust-Oleum Metallic spray paint in Bright Gold.



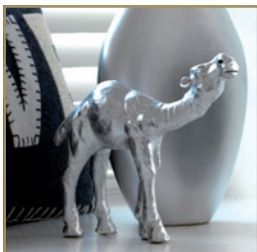
▲ Quite possibly one of our most dramatic transformations! These stunning candlesticks were spray painted in Rust-Oleum Metallic Bright Gold and Chrome. All were bought from a car-boot sale - check out the "before" shot!



BEFORE



BEFORE



▲ Camel and vase in background sprayed with Rust-Oleum Metallic in Chrome.



▲ Our Buddha was revived with two coats of Rust-Oleum Metallic Elegant Gold spray paint.

Metallic paint has seen a recent revival (although for Rust-Oleum customers it has always been a favourite!) Create instant glamour and grandeur by adding some gorgeous metallic objects to a room that don't cost a fortune. Colin the camel underwent a serious transformation, from tacky tourist bric-a-brac to an eye-catching show piece! Our collection of candlesticks underwent a dramatic transformation and look far more expensive than the £20 spent on buying them *and* painting them. Try it for yourself and be amazed at what a metallic finish can add to just about anything!



► Metallics go beyond gold and silver: Rust-Oleum Bright Copper spray paint is a great alternative for these candle holders. It's slightly softer but still adds instant sophistication to your room.

◄ Lantern sprayed with Rust-Oleum Metallic spray paint in Copper.





# Let Us Spray

**From mannequins to mantelpieces, chairs to chests, kitchens to cabinets. You name it – *We Spray Anything* paint it! Make It Yours caught up with Managing Director and master spray painter, Paul Harris. He shared his tips and techniques for achieving the perfect finish and explained why you shouldn't be afraid to give spray painting a go.**

With over 35 years of spray painting experience in automotive, architectural and commercial environments, Paul Harris decided to delve deeper into the art, reaching out to a wider range of Individuals and businesses, making them aware that anything can be transformed into something new with spray painting. The result of this endeavour was the formation of an innovative new business, *We Spray Anything*.

Paul explained “take a kitchen for example, the cost to buy a new one is extremely high, most people want something original and bespoke but they have to dig deep into their pockets to get what they want. Our concept is simple: recycle and revamp. It is surprising how a simple change of colour can completely transform a kitchen, not just the colour, but also the finish, wood doesn't have to look like wood, metal doesn't have to look like metal, In fact wood can look like metal and vice versa. The kitchen is just one example; the concept can work with literally anything.”



We Spray Anything's clients range from Architects and Interior Designers to celebrities, property developers and home owners. They welcome any spray painting challenge and consistently deliver stunning pieces with bespoke finishes that are nothing short of works of art - some great examples are pictured above.





We asked Paul for his expert advice on a couple of projects that are popular with Make It Yours readers right now. The first was a wooden fire surround. For this project Paul chose Rust-Oleum Universal spray paint in Real Almond (Gloss) and explained, "This paint is great for wood. It's a paint and primer in one and it works on anything. It's quick and easy and the results are astounding."

"One thing people worry about when painting objects of this size is that the paint is going to run. If you get your technique right you won't have any problems. Problems occur when you're spraying too closely to an object or simply by adding too much paint at once. Keep the can the recommended 30cm from the surface of the object when applying the paint and move reasonably quickly from left to right, applying a fine mist of paint. Give it a few minutes to dry and apply another fine mist. Building up the paint film gradually gives great opacity and will prevent paint runs and give a fantastic finish"

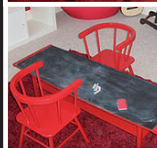
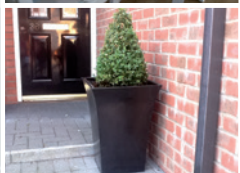
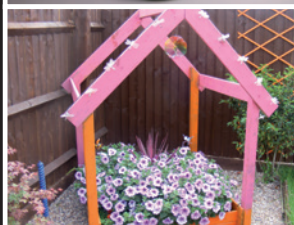
For the second project Paul tackled an MDF radiator cover. This time he chose Rust-Oleum Painter's Touch spray paint in Green Apple (Satin). Paul said "Most people, when painting a radiator cover tend to choose brush applied paint. Normally because they don't realise spray painting is an option! When you're working with something as intricate as this item you need to get into all of the nooks and crannies. That's virtually impossible to do well with a brush. With spray paint, however, it's simplicity itself. On something porous like MDF I always use a surface primer first (Paul used Rust-Oleum Surface Primer spray). It gives you a good foundation upon which to paint and saves a lot of time."

We're sure you'll agree Paul has made a great job of both the fireplace and the radiator cover. We asked him if he had any advice for anyone who hadn't tried spray painting before. He said "Give it a go! If you're not confident, start small and test the paint on low value items to practice your technique. You'll be amazed at how easy it actually is and you'll love the end result!"



For more information about We Spray Anything, please contact Paul Harris on **01527 877129** or email [info@wesprayanything.com](mailto:info@wesprayanything.com). Alternatively further information can be found by visiting [www.wesprayanything.com](http://www.wesprayanything.com)

[wesprayanything.com](http://wesprayanything.com)



• TRUSTED QUALITY SINCE 1921 •

**RUST-OLEUM®**

# SHOW US YOUR STUFF AND WIN GREAT PRIZES

Every month until the end of May 2014 we're offering our customers an opportunity to win £250. To be in with a chance of winning all you need to do is send us a photograph of a project you've undertaken with Rust-Oleum spray paint. Each month our panel of judges will select the most original and creative projects. The winning project will win £250 and ten runners up will each receive a bumper pack of Rust-Oleum spray paint. To enter simply visit [www.rustoleumspraypaint.com](http://www.rustoleumspraypaint.com) and follow the 'Show Us Your Stuff' competition link.

See website for competition rules and full terms and conditions. Entrants must be 18 or over. Competition runs from 1st May 2013 until 31st May 2014 (inclusive). Submitted projects must involve the use of Rust-Oleum spray paints. One cash prize of £250 is offered per month. 10 runners up prizes of six 400ml cans of Rust-Oleum spray paint - no cash alternative. Promoter: Tor Coatings Ltd., DH3 2RE, UK.



Melamine kitchen doors painted with Mode Ultra High Gloss in Carmine Red.



Aluminium lamp shade painted with Mode Ultra High Gloss in Sunflower.

Wooden kitchen chair painted with Mode Ultra High Gloss in Pure Aqua.



## Ultra high gloss, straight from the can.

Mode from Rust-Oleum is a new, premium quality spray paint that produces a stunning high gloss finish straight from the can. Easy to apply it can be used to brilliant effect to brighten and modernise items made from wood, metal, melamine and more. Ideal for kitchen cabinets and furniture. Choose your colour and be inspired at [www.rustoleumspraypaint.com](http://www.rustoleumspraypaint.com).

• TRUSTED QUALITY SINCE 1921 •  
**RUST-OLEUM®**

Available at

**HOMEBASE**

